

Community Consultative Committee – November 2024

13 November 2024



WELCOME AND APOLOGIES



Welcome

Apologies

Declaration of interests

Confirmation of previous minutes

AGENDA



- 1. Actions from previous meeting**
- 2. Correspondence**
- 3. Operational update**
- 4. Approvals**
- 5. Business Arising**
- 6. Environmental Incidents / Non-compliances**
- 7. Environmental Performance**
- 8. Community Complaints & Enquiries**
- 9. Environmental Projects**

ACTIONS / BUSINESS ARISING FROM PREVIOUS MINUTES



Action / Business Arising	Action Owner	Update
Nil	-	-

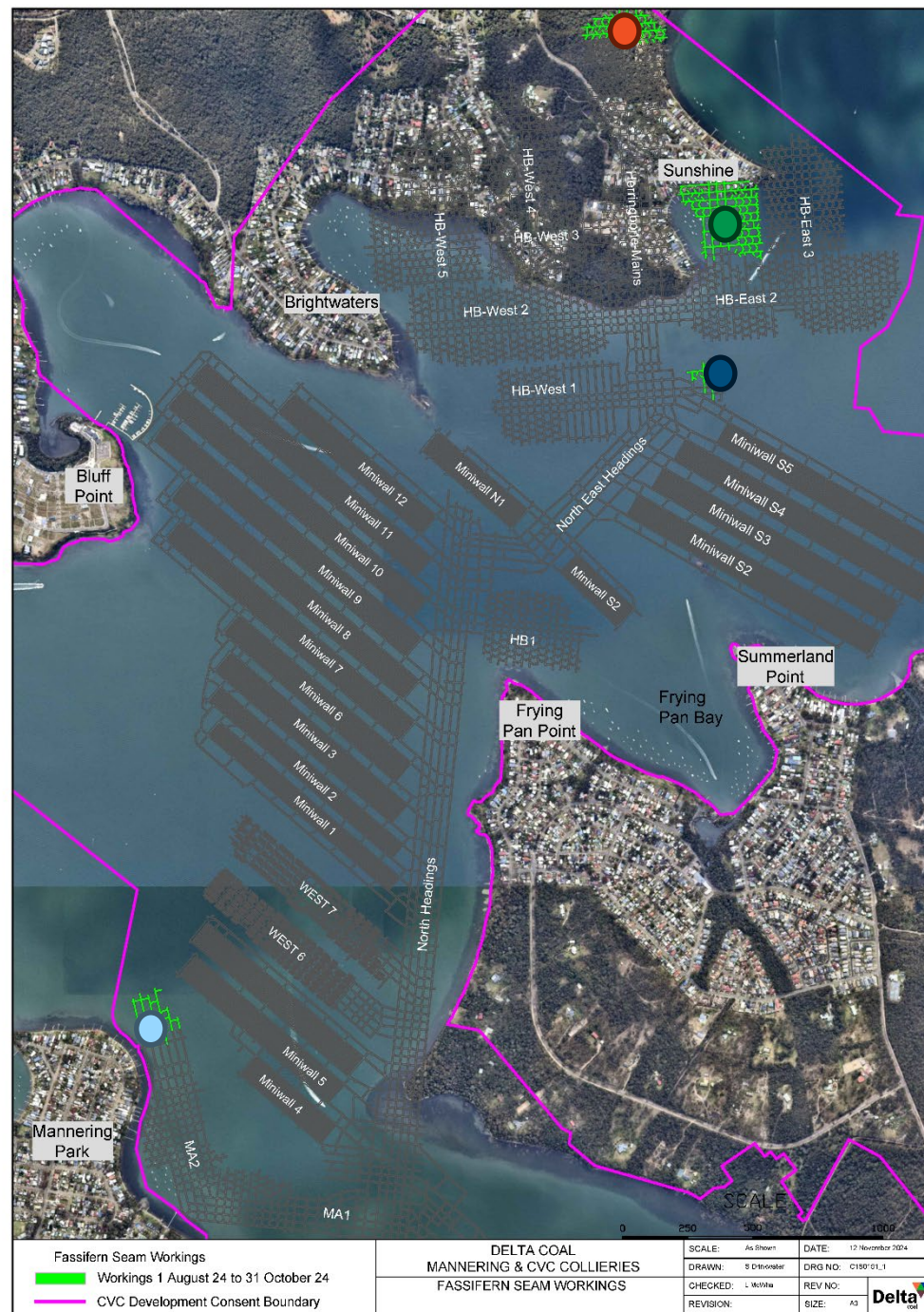
Correspondence since previous meeting

- 21/8/24 – emails RM/MMH to CCC – Catherine Hill Bay Geology & history
- 21/8/24 – emails LM/MMH to CCC – Draft Minutes and Noise Level Chart
 - (included in slides)
- 28 & 29/8/24 – emails AW/MMH/LM – Chain Valley Approvals.
 - Query about approvals dates. Current CVC & MC approval extends to 31 December 2027, with the Consolidation project seeking extension to 2029.

OPERATIONAL UPDATE

Production

- Production continues in HB-Mains
- Production in HB-East 1 Panel commenced in reporting period.
- Production continued in HB-East 4 Panel
- Production continues in MA2 panel.
- Production 1 Aug 2024 to 31 Oct 2024 was 242,077 t ROM Coal.
- All coal produced delivered to Power Station.



Current Approvals

Chain Valley Colliery

- EPL 1770: Environmental Protection License - October 2023 (variation pending to remove Faecal Coliform limits and monitoring conditions)
- CVC SSD-5465 (MOD 4): Development Consent – August 2021
- Extraction Plan: MWS5 and NPA (Amendment 1, October 2024)

Mannering Colliery

- EPL 191 – Mannering Colliery – June 2023
- Mannering Colliery Project Approval PA 06_0311 (MOD 5) – June 2020

CONSENT CONSOLIDATION PROJECT

- Independent Expert Advisory Panel are forming their independent assessment of the mine's subsidence impact assessment.
- Following this, the Department of Planning, Housing and Infrastructure (DPHI) will prepare their assessment report of the projects Environmental Impact Statement (EIS).
- DPHI will then refer the project to the Independent Planning Commission (IPC) as the approving authority.
- The IPC will prepare and publish an assessment on the project and make a determination whether to approve the Consent Consolidation Project.



State Significant Development

Assessment

Chain Valley Colliery Consolidation Project

Central Coast

Current Status: More Information Required

Interact with the stages for their names ⓘ



Want to stay updated on this project?

Notify me

**Stay up to date with the project via
the Planning Portal at the link below**

<https://www.planningportal.nsw.gov.au/major-projects/projects/chain-valley-colliery-consolidation-project>

ENVIRONMENTAL INCIDENTS / NON- COMPLIANCES

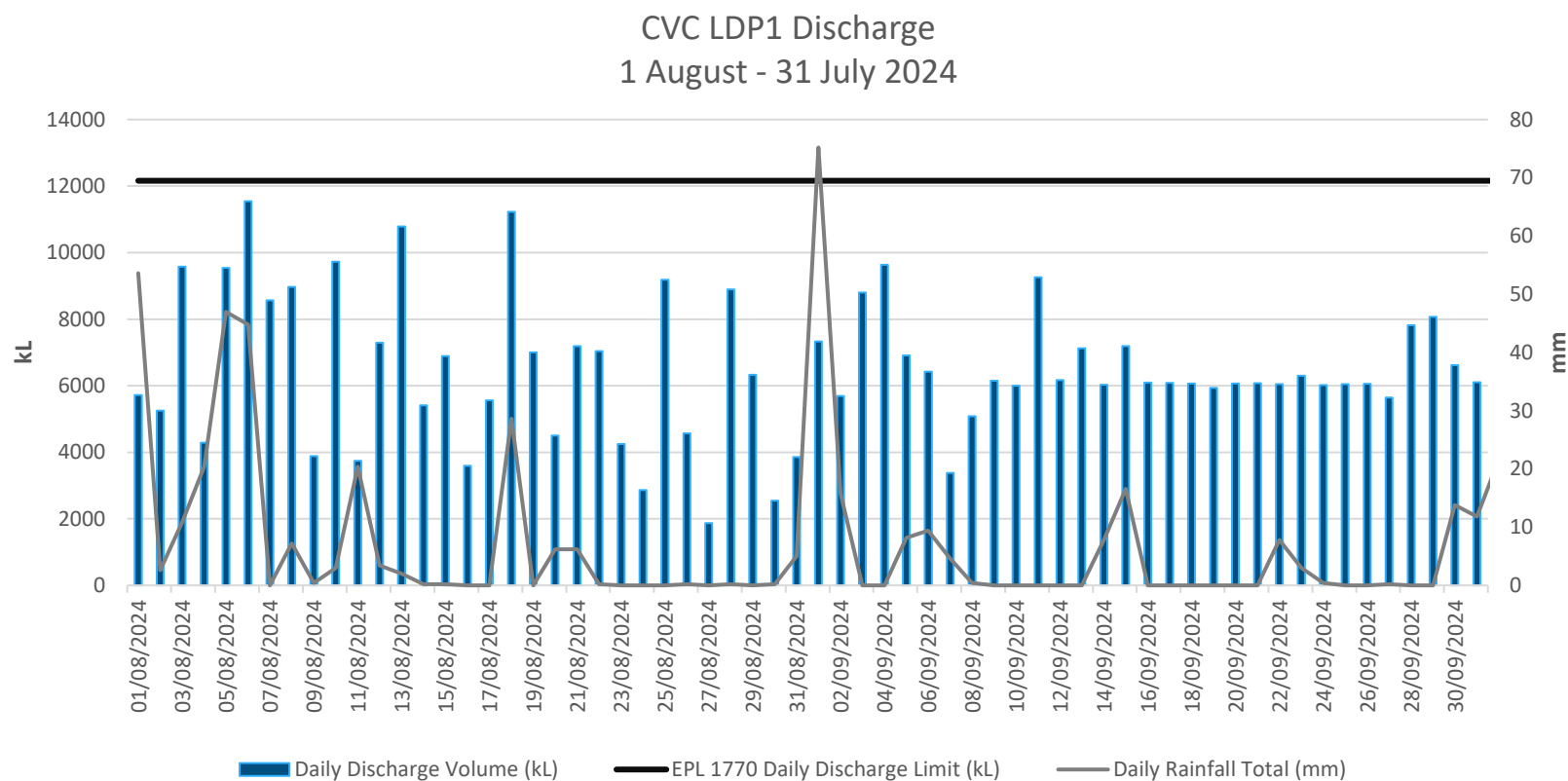


Site	Date	Type	Details
Chain Valley	11 September 2024	Water Quality Exceedance	Faecal Coliform Exceedance, result of 250 CFU/100ml compared to limit of 200 CFU/100ml. Notably upstream results were higher and the incident investigation determined that the exceedance was not a result of CVC operations, with wastewater discharge to ponds being ceased in July 2023.
Chain Valley	13 August and 17 September 2024	Depositional Dust Exceedance	Depositional Dust Gauge DDG004 contaminated by activities unrelated to mine operations. Likely a result of adjacent Transgrid operations.

ENVIRONMENTAL PERFORMANCE



CVC Surface Water Daily Discharge and Rainfall Volumes



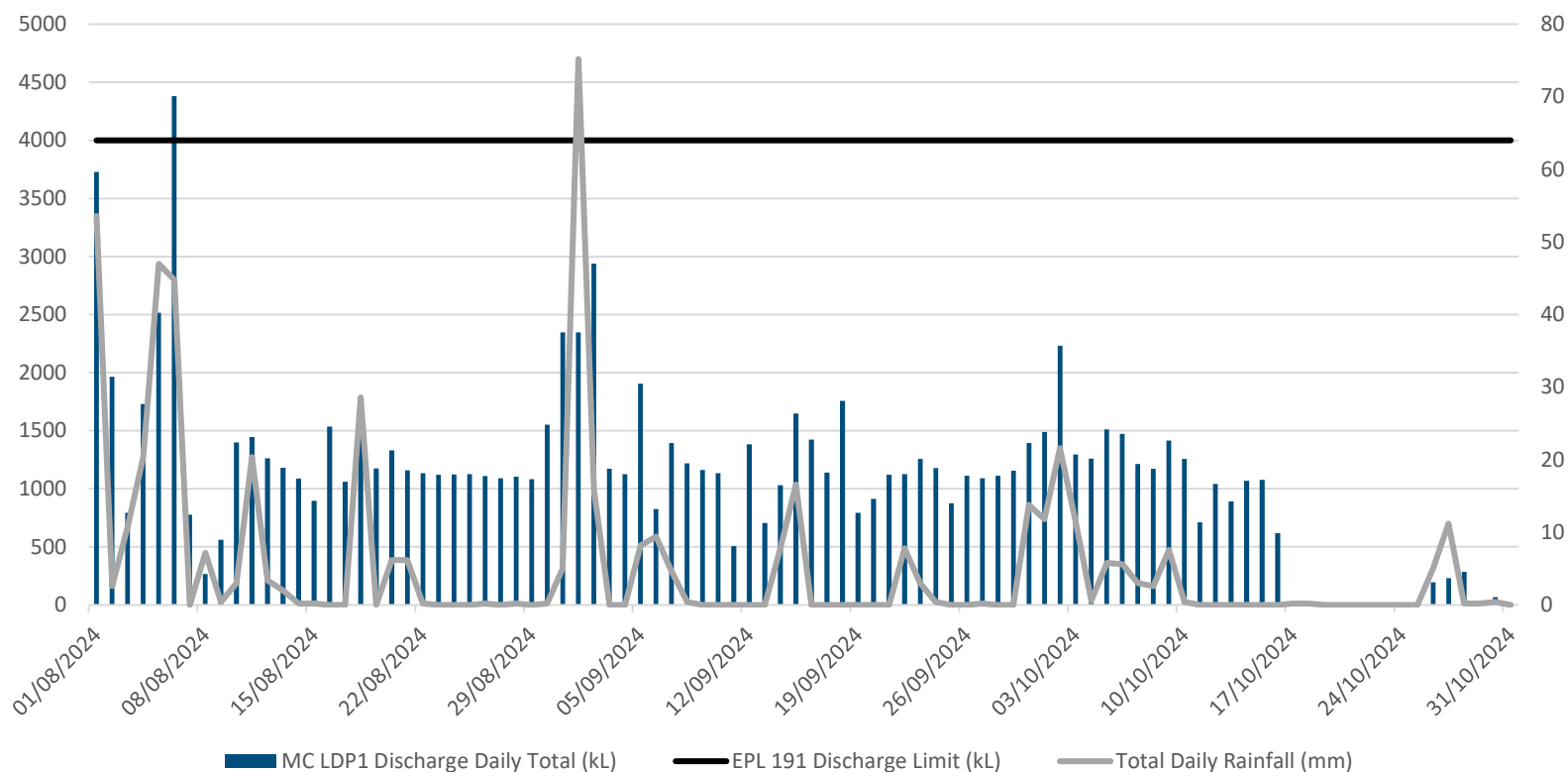
CVC Surface Routine Water Quality Monitoring (LDP1 Monthly)

LDP1	Limits	Aug – 2024	Sep – 2024	Oct - 2024
Faecal Coliforms (CFU/100ml)	200	60	250	80
Enterococcus CFU/100ml	40 Primary Contact (NHMRC, 2008 ¹) 150 Secondary Contact (NHMRC, 2008 ¹)	4	400	66
pH (pH Units)	6.5-8.5	7.68	7.7	7.78
Total Suspended Solids (mg/L)	50	15	18	14
Oil and Grease (mg/L)	10	<5	<5	<5

¹ National Health and Medical Research Council, *Guidelines for Managing Risks in Recreational Water*, 2008

MC Surface Water Daily Discharge Volume and Rainfall Volumes

MC LDP1 - Surface Water Daily Discharge
1 August 2024 - 31 October 2024



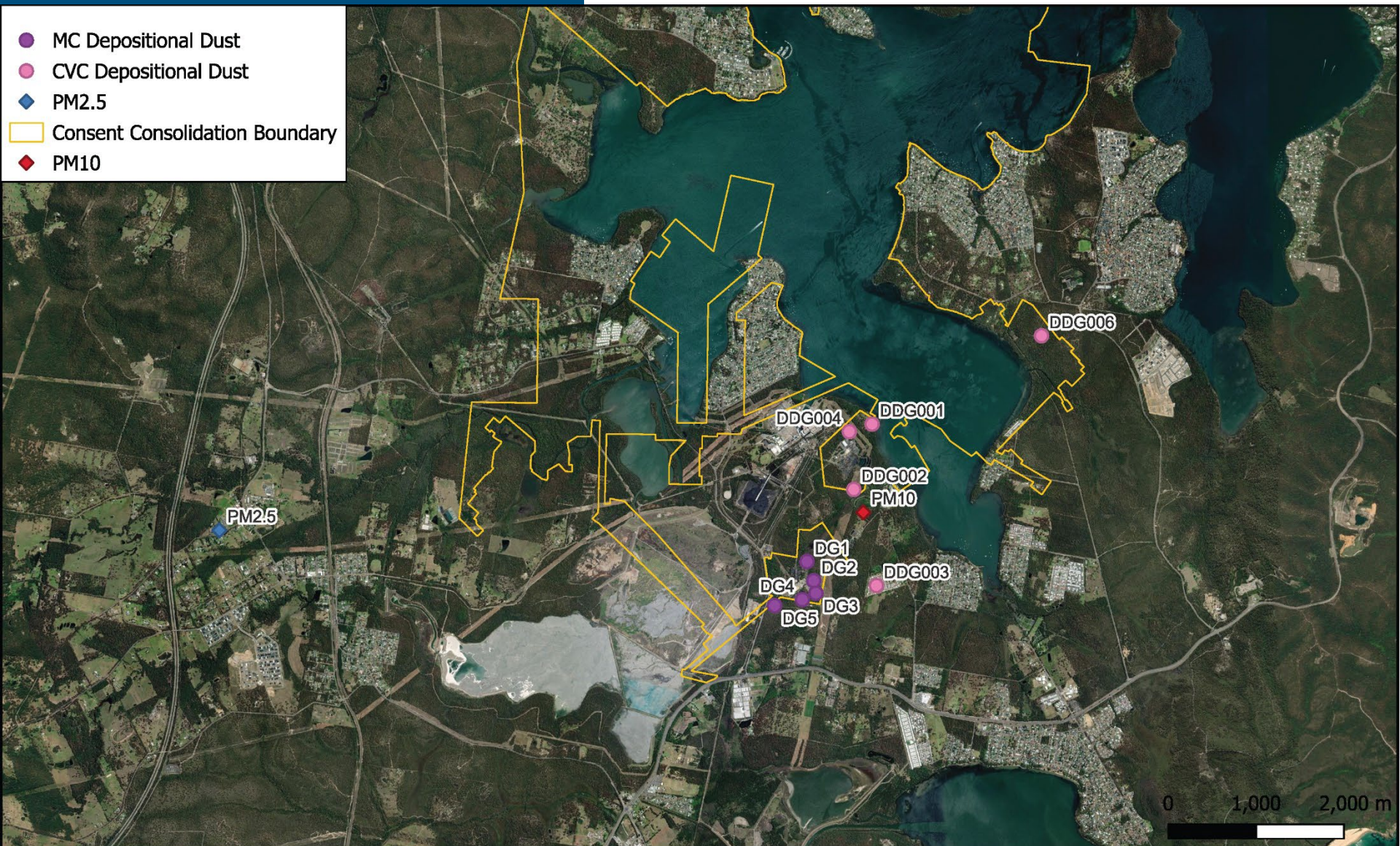
ENVIRONMENTAL PERFORMANCE





MC Surface Water Quality Monitoring

LDP1	Limits	Aug-2024 Average	Sep-2024 Average	Oct-2024 Average
Oil & Grease mg/L	10	<5	<5	<5
TSS mg/L	50	4.8	6.9	8.7
pH	6.5-8.5	7.85	8.00	7.81

- MC Depositional Dust
- CVC Depositional Dust
- PM2.5
- Consent Consolidation Boundary
- PM10



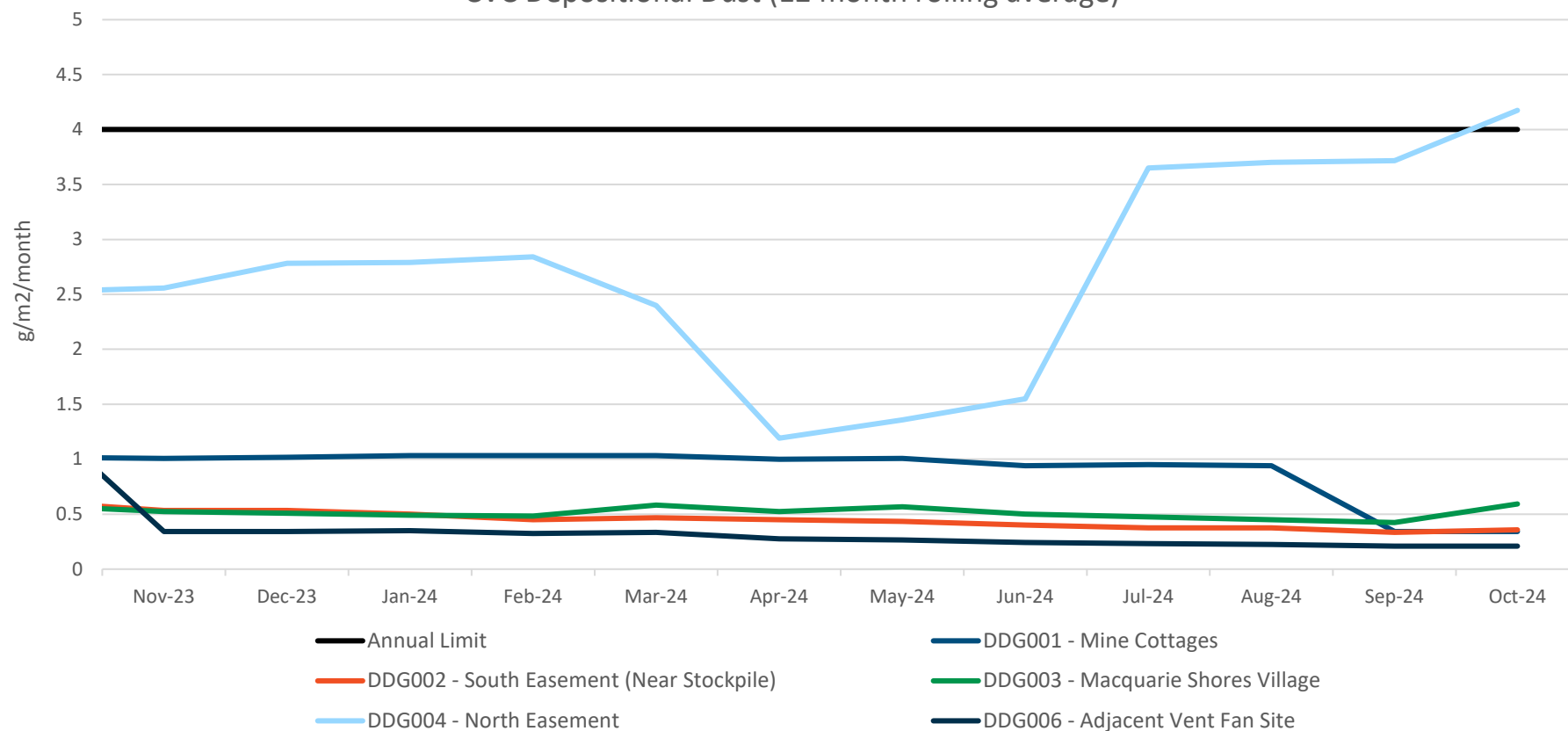
 	Delta Coal Mannering Colliery		Date:12 Nov 2024	Scale: As shown
	Air Quality Monitoring Locations		Drawn: LM	DRG NO: N/A
			Checked: -	REV NO: 0
			Signed: -	Size: A3

ENVIRONMENTAL PERFORMANCE

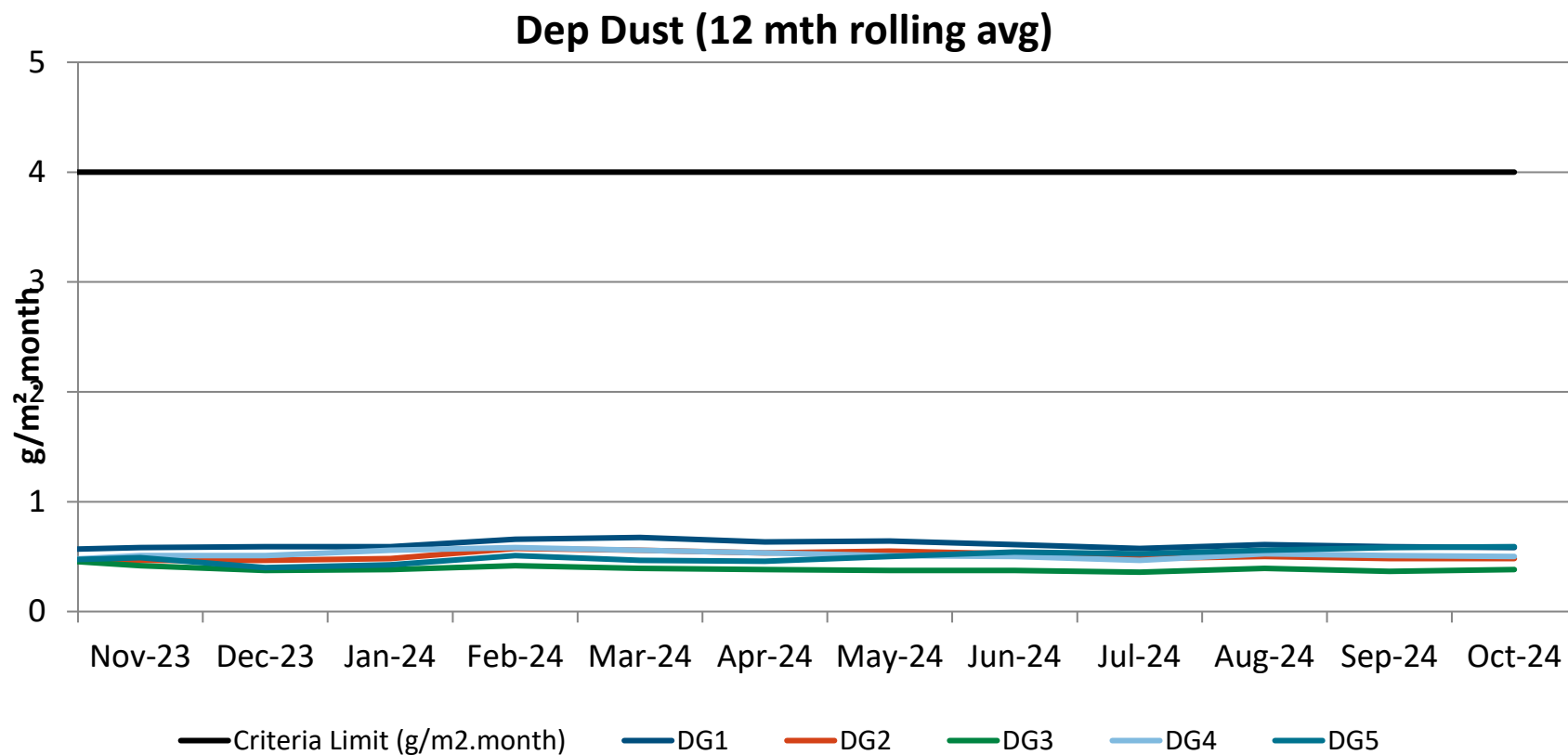


CVC Depositional Dust Monitoring

CVC Depositional Dust (12 month rolling average)

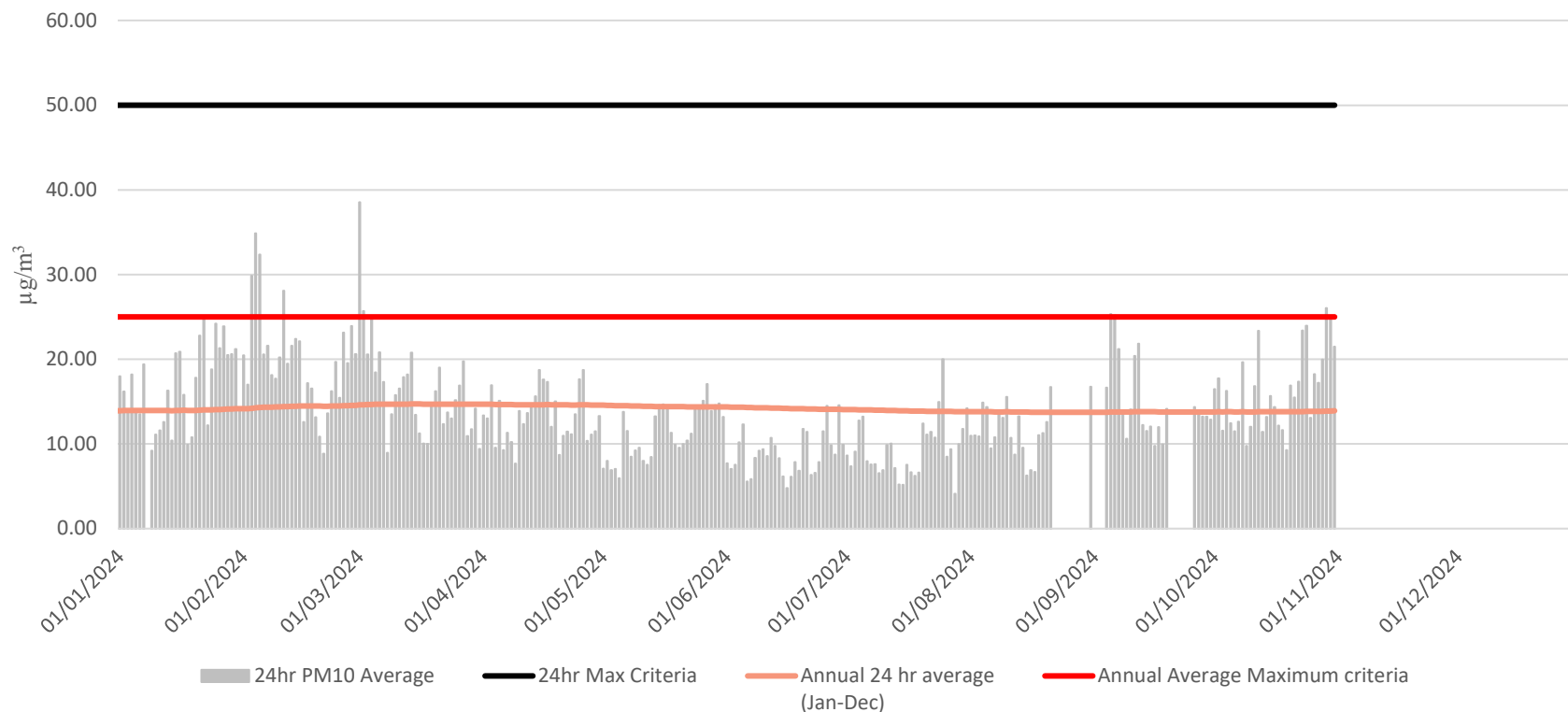


MC Depositional Dust Monitoring



PM₁₀ Monitoring

PM10 ($\mu\text{g}/\text{m}^3$) Monitoring (YTD 2024)

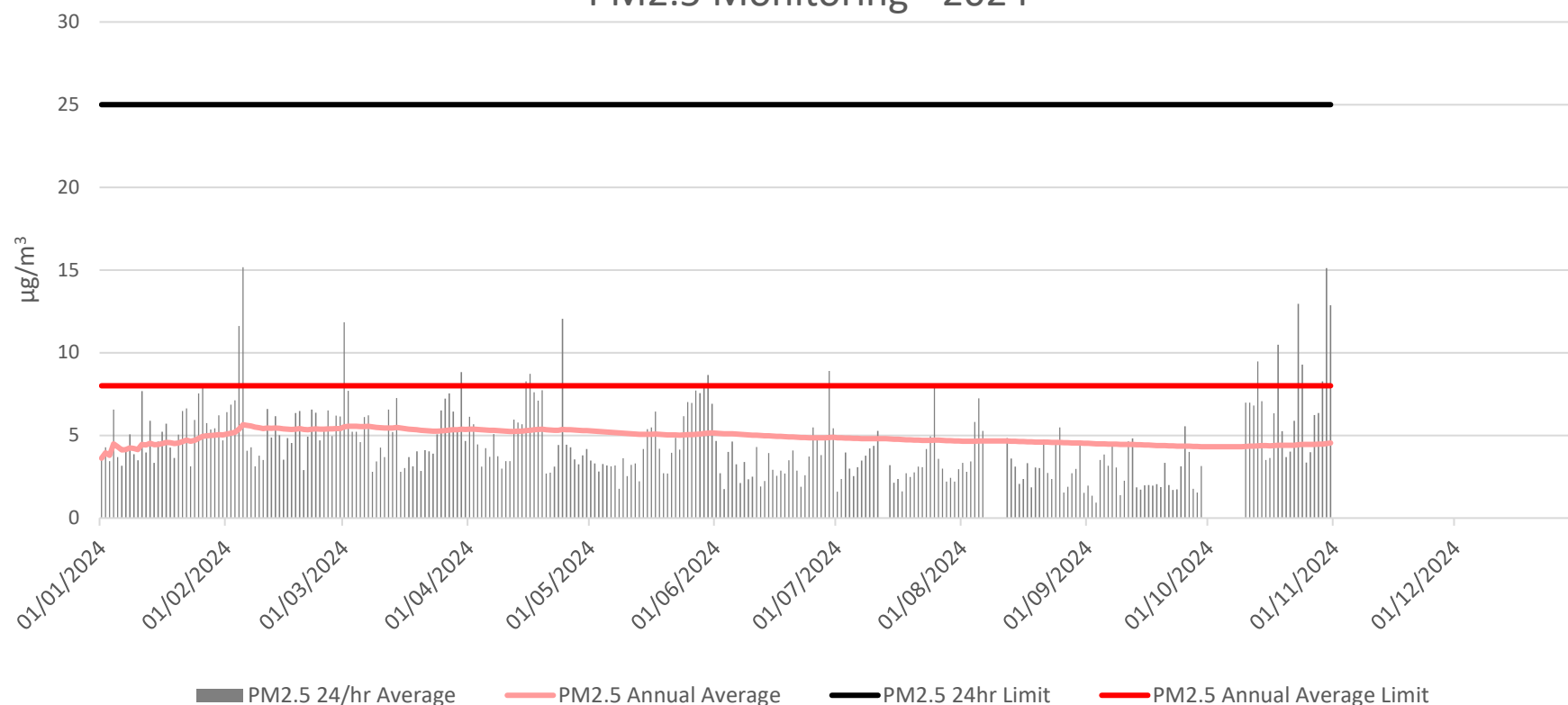


ENVIRONMENTAL PERFORMANCE



PM_{2.5} Monitoring

PM_{2.5} Monitoring - 2024

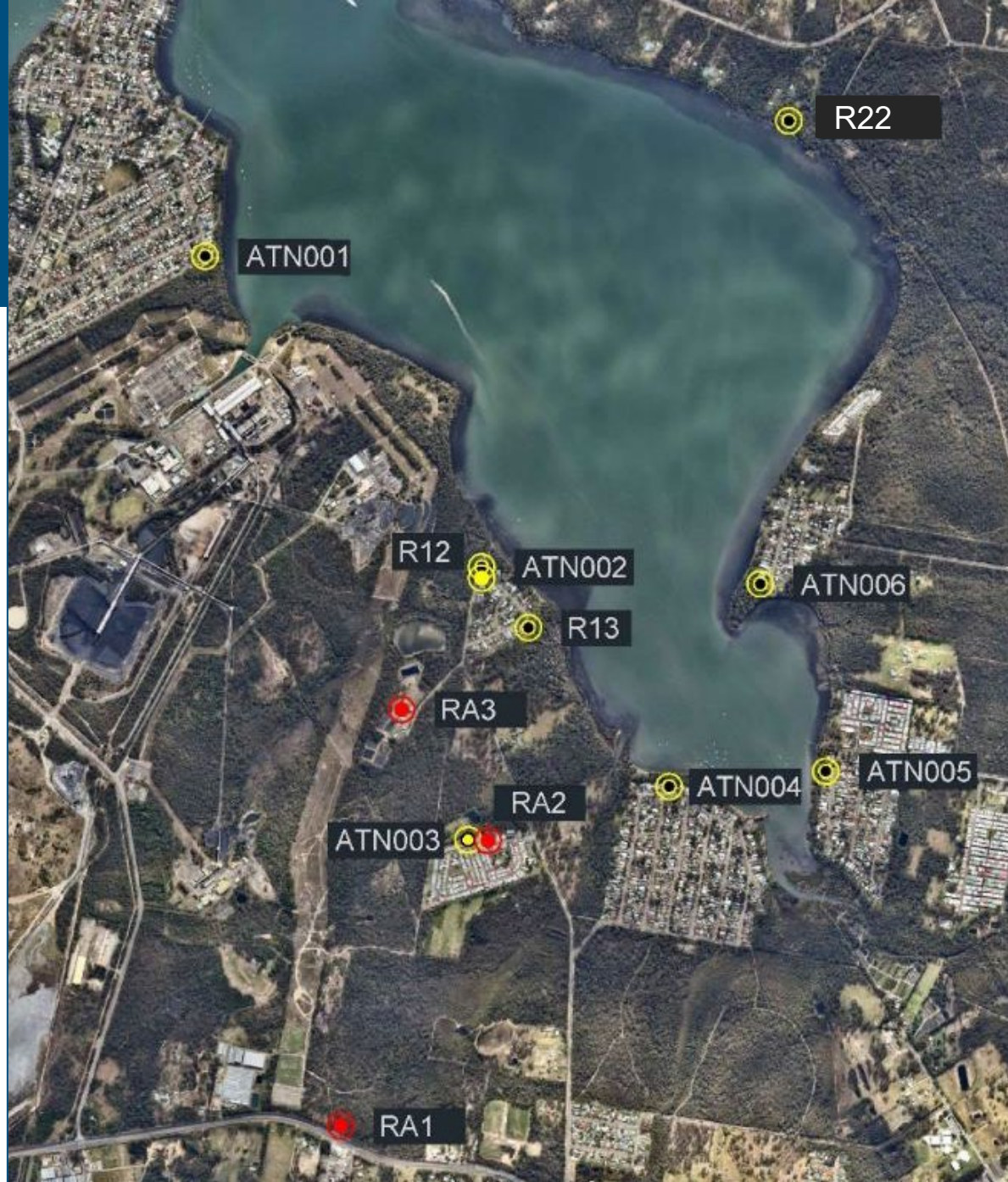


ENVIRONMENTAL PERFORMANCE

Noise Monitoring Locations

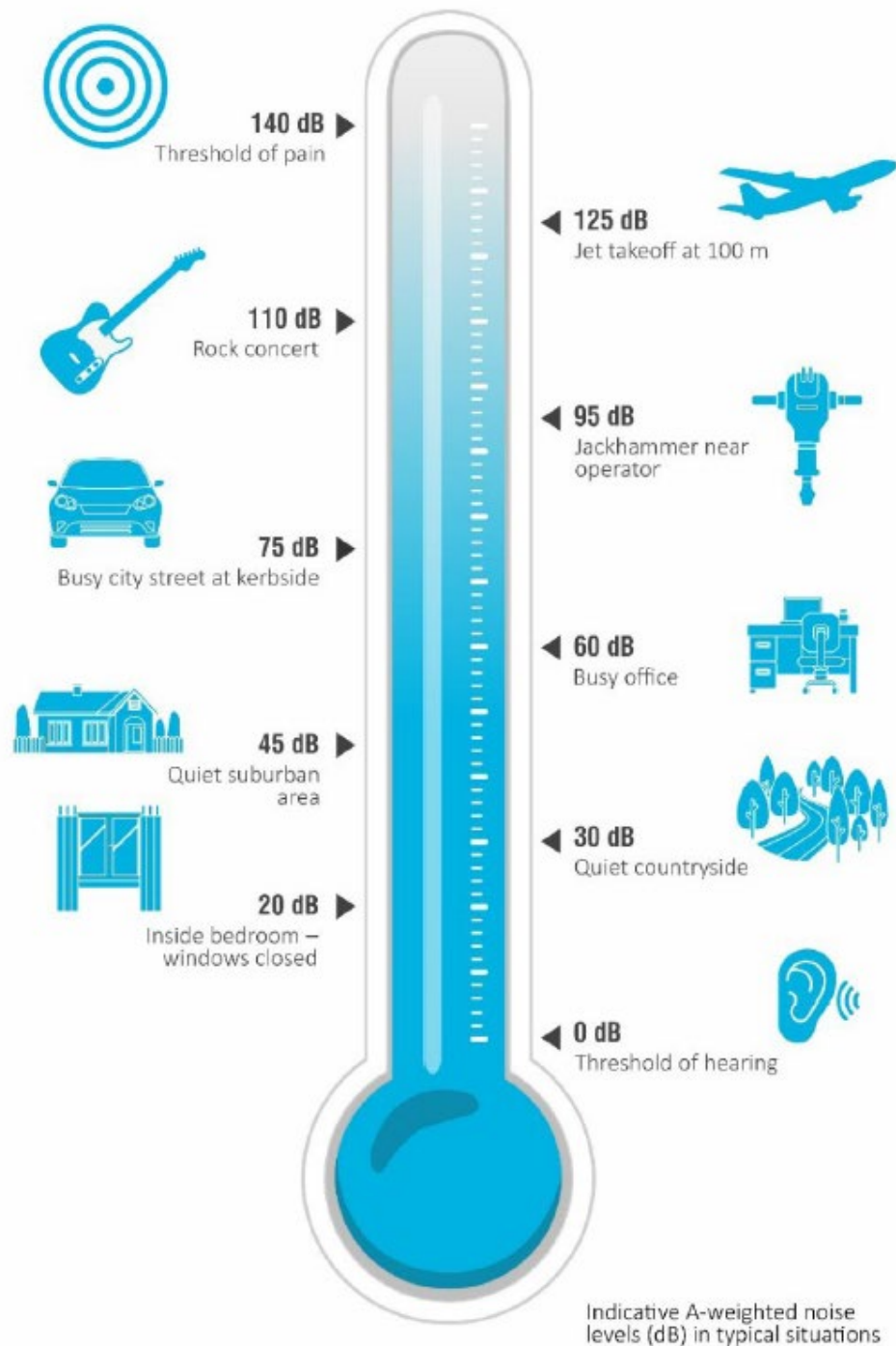
Red = MC
Monitoring Location

Yellow = CVC
Monitoring Location



ENVIRONMENTAL PERFORMANCE

Noise Monitoring Noise Comparison



ENVIRONMENTAL PERFORMANCE



Noise Monitoring – CVC

Q3 2024 noise monitoring was undertaken on the 11th, 20th and 24th September 2024.

The highest result for each monitoring location during the monitoring period is presented.

Monitoring Point	Site Contributions, dB		Noise Limit		Compliance Status
	LA _{EQ} (15 min)	LAMAX	LA _{EQ} (15 min)	LAMAX	
Chain Valley Colliery Q3 2024					
ATN001	IA	IA	38	45	☑
ATN002	IA	IA	49	54	☑
ATN003	IA	IA	36	45	☑
ATN004	IA	IA	35	45	☑
ATN005	IA	IA	35	45	☑
ATN006	IA	IA	37	45	☑
R22	41 (39 + 2 LFN)	40	46	46	☑
R12	IA	IA	49	53	☑
R13	IA	IA	43	49	☑

ENVIRONMENTAL PERFORMANCE



Noise Monitoring – MC

No Exceedances for MC noise monitoring between August-October 2024.

Highest result recorded during monitoring for a location is presented. Monitoring conducted during Evening (6-10pm) and Night period (10pm onward). IA = Inaudible.

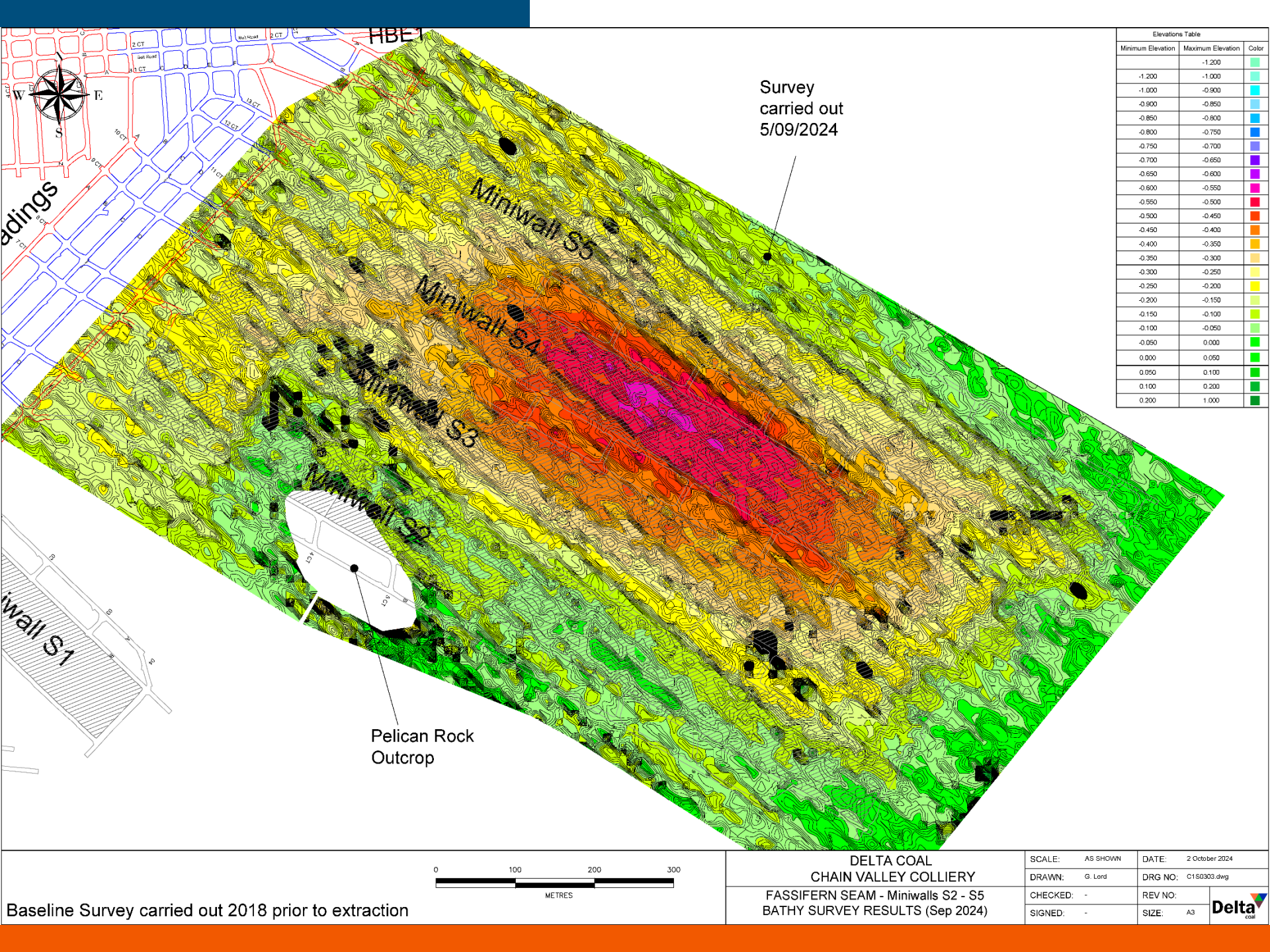
Location	Date	Site Contributions, dB		Noise Limits, dB		Compliance status
		LAEQ	LAMAX	LAEQ	LAMAX	
August 2024						
RA1	13/08/2024	IA	IA	36	46	☑
RA2		IA	IA	40	45	☑
RA3		IA	IA	39	49	☑
September 2024						
RA1	11/09/2024	IA	IA	36	46	☑
RA2		IA	IA	40	45	☑
RA3		IA	IA	39	49	☑
October 2024						
RA1	23/10/2024	IA	IA	36	46	☑
RA2		IA	IA	40	45	☑
RA3		IA	IA	39	49	☑

Subsidence

Delta Coal utilises survey marks throughout active mining areas and foreshore monitoring above and adjacent active workings. It also utilises bathymetric (sonar scanning) monitoring to record subsidence in the lake over secondary extraction areas.

The following two slides present the terrestrial fixed point monitoring from March 2024 above first workings in the Northern Mining Area and the bathymetric monitoring above secondary extraction areas in Lake Macquarie from September 2024.

Subsidence results to date have been compliant with approved limits (20mm for first workings and 780mm for secondary extraction workings).



Elevations Table		
Minimum Elevation	Maximum Elevation	Color
-1.200	-1.200	
-1.000	-0.900	
-0.900	-0.850	
-0.850	-0.800	
-0.800	-0.750	
-0.750	-0.700	
-0.700	-0.650	
-0.650	-0.600	
-0.600	-0.550	
-0.550	-0.500	
-0.500	-0.450	
-0.450	-0.400	
-0.400	-0.350	
-0.350	-0.300	
-0.300	-0.250	
-0.250	-0.200	
-0.200	-0.150	
-0.150	-0.100	
-0.100	-0.050	
-0.050	0.000	
0.000	0.050	
0.050	0.100	
0.100	0.200	
0.200	1.000	

Survey
carried out
5/09/2024

Miniwall S5

Miniwall S4

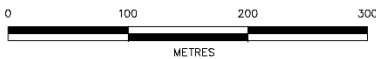
Miniwall S3

Miniwall S2

Pelican Rock
Outcrop

adings

Miniwall S1



DELTA COAL CHAIN VALLEY COLLIERY		SCALE: AS SHOWN	DATE: 2 October 2024
FASSIFERN SEAM - Miniwalls S2 - S5		DRAWN: G. Lord	DRG NO: C1S0303.dwg
BATHY SURVEY RESULTS (Sep 2024)		CHECKED: -	REV NO:
		SIGNED: -	SIZE: A3



Baseline Survey carried out 2018 prior to extraction

ENVIRONMENTAL PERFORMANCE

Biodiversity Monitoring

Annual biodiversity monitoring as required under the CVC development consent was undertaken in October 2024. Assessing vegetation condition, composition, weed occurrence and feral animal presence.

There was a slight increase to the biodiversity score to the previous year. At the targeted areas being the biodiversity enhancement area and ventilation fan site.

The report is available on the Delta Coal website.



ENVIRONMENTAL PERFORMANCE

Rehabilitation Monitoring

Annual rehabilitation monitoring for the Chain Valley Colliery former mine cottages was undertaken in August 2024.

Results indicate that the rehabilitation is following the trajectory to native bushland.



Community Complaints between 1 August 2024 and 31 October 2024:

- Chain Valley Colliery - Nil community complaints received in period.
- Mannering Colliery - Nil community complaints received in period.

General Enquiries between 1 August 2024 and 31 October 2024 :

- No enquiries received

ENVIRONMENTAL PROJECTS



Desilting works currently being undertaken at the Mannering Colliery ponds in November 2024.



ENVIRONMENTAL PROJECTS



Delta Coal is constructing a perimeter fence to improve site security.



Questions?